



HWP041

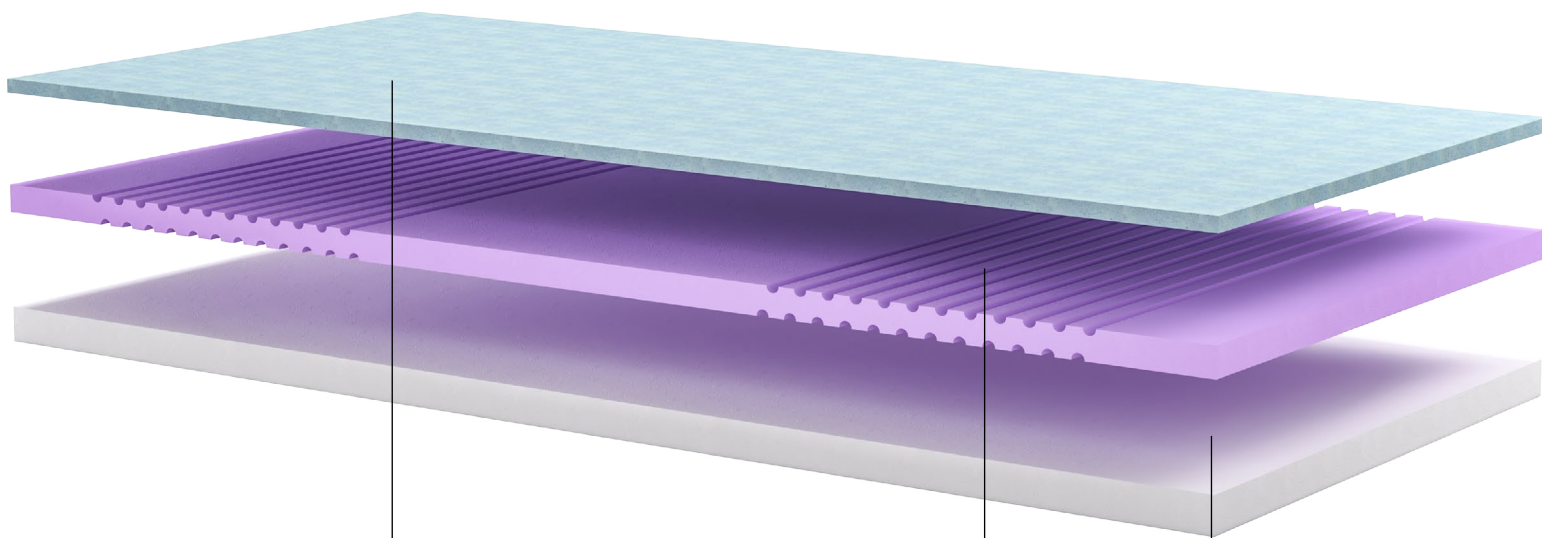
PRESSURE-RELIEVING
MATTRESS

- Ideal in ICU and special wards.
- Can meet various postures requirements, prevent pressure ulcers.

Healthward

CORE

Three-layer mattress with three foam densities, high resilience, strong support.



Top Layer

42kg/m³ Zero pressure ultra-soft memory foam, which redistributes pressure and enhances blood circulation. It conforms to body curve, increases the force area, and provides comfortable support for patients.



Middle Layer

35kg/m³ foam with enhanced airflow design for superior mattress breathability.



Bottom Layer

40kg/m³ firm foam, providing extra solid support during patient sitting or lying down.



COVER



- Improve Clinical Outcomes

Excellent pressure redistribution aids in wound prevention.

- Reduce Financial Burden

Broad and diverse portfolio designed for quality and durability.

- Reduce Risk of Injury

Standard safety features reduce fall risk and promote mobility.

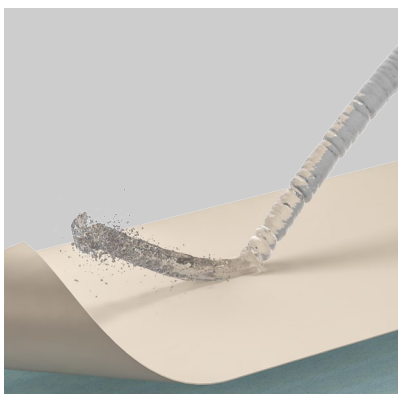
- Clinically Proven

Excellent pressure redistribution and shear management as found in independent tests.



Safe zipper design, anti-leakage, easy disinfection.

PU material, waterproof and replaceable.



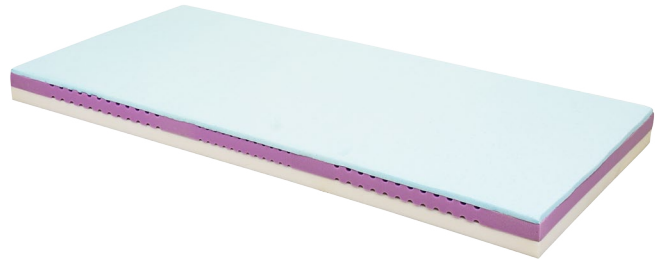
Easy to clean, can be disinfected with neutral detergent, low-chlorine disinfectant, or 75% alcohol, and dried at low temperatures.



Optional Colour: Blue or Grey

PRODUCT INFORMATION

Model	HWP041
Length	2000mm
Width	900mm
Height	customizable
Safe working load	200kg



MANIPULATION OF FOAM PROPERTIES

Open Cell Memory Foam Technology

Better Airflow: Open cell memory foam mattress has a more breathable structure that allows air to flow through the mattress, preventing heat buildup and making it more comfortable to sleep on.

Faster Recovery: Open cell memory foam mattress is designed to quickly recover its shape after being compressed, can provide more consistent support and pressure relief over time.

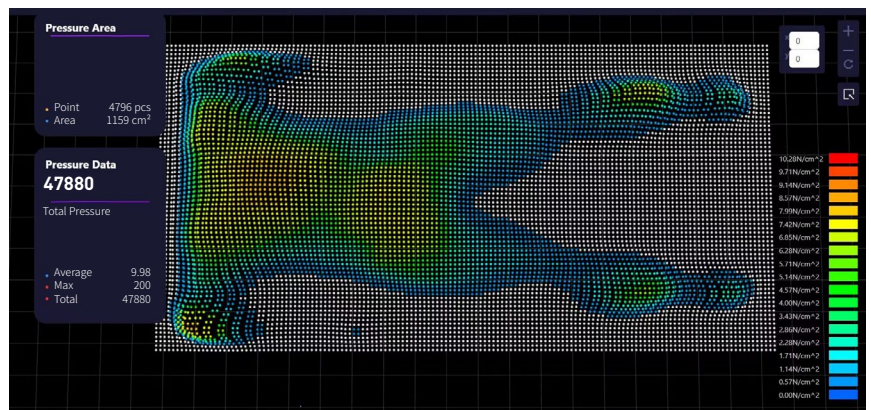
Surface Modification and Layering

Vary pattern, pattern size, pattern spacing and cutting depth to protect high-risk areas.

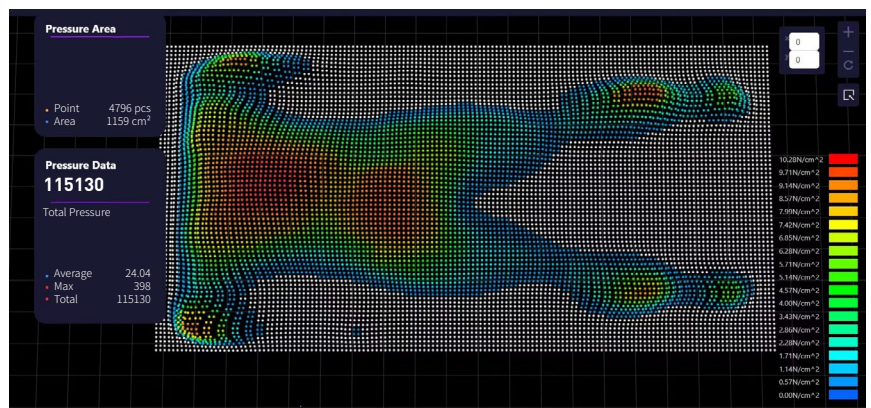
Zoned pressure redistribution with improved air circulation and maximized comfort.

PRESSURE MAP

The pressure mapping system provides knowledge about interface pressure between a person and the surface person is lying, using a measuring sheet comprised of individual measurement points.



Pressure-relieving Mattress



Old Mattress

Healthward

Due to factors in lighting and print production, photos may exhibit slight variations in color compared to the actual products. Additionally, as designs are updated and improved, product parameters and appearances may change. Please contact us or one of our authorized distributors for the most up-to-date product specifications.



 17800 CASTLETON ST STE 180.CITY OF INDUSTRY CA 91748

 +1 (603) 416-3063 ·  24/7

 export@health-ward.com

 www.health-ward.com



General Catalog