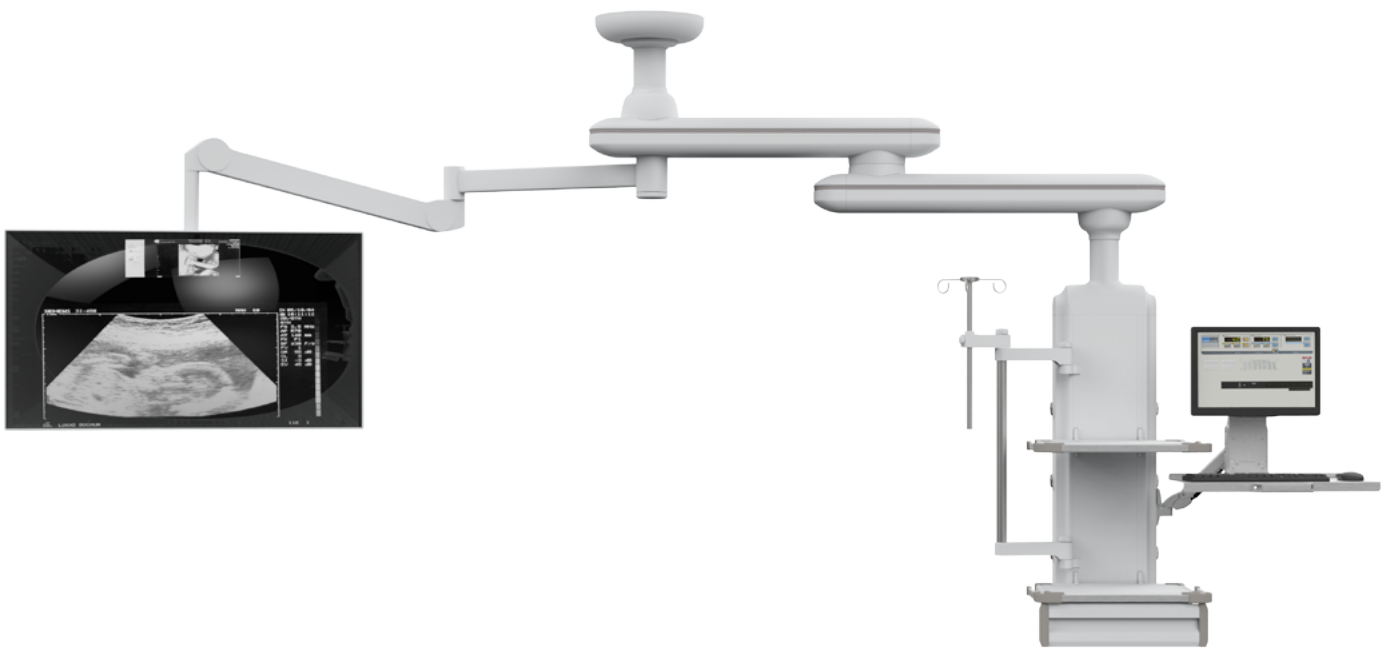


HW-PT008

MEDICAL BRIDGE CEILING PENDANT FOR
IMAGING OPERATING ROOM



HW-PT008

FEATURES AND HIGHLIGHTS

The medical medical bridge ceiling pendant for imaging operating room is a basic equipment specially designed for endoscopic treatment. Used for carrying instrument of endoscope, monitor and so on. Providing air pump, power supply, video and communication interfaces for equipment, with cable and pipeline, making the operating environment orderly. Product Application: suitable for imaging operating room, endoscopy center.

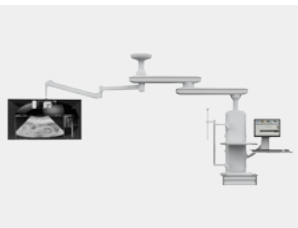
Optional Accessories:

- * Net basket - Stainless steel net basket
- * We manufacturer and provide different standard of medical gas outlet: British Standard, American standard, German standard, French standard, Japanese Standard, etc.
- * Different standard of medical gas outlets & adapters: British standard, French standard, German standard, Diss, Ohmeda, Chemetron, and etc.
- * Inhalers - All kinds of oxygen inhalers (disposable, simple, external hanging, etc.)
- * Negative pressure regulating valve
- * Waste liquid collection device (external hanging type)

Material and Process

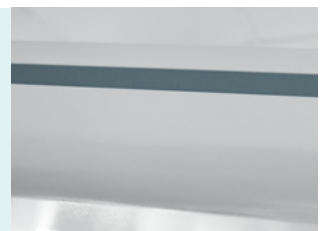
Appearance Design

The design of double - joint heavy - duty spring arm monitor holder and double hanging arms, the whole bridge pendant is fully sealed, no sharp angle to prevent the impact.



Painting

Imported plastic powder, electrostatic painting process, painting thickness 0.12mm, brightness 60°, paint can resist 50kg impact.



Welding

Panasonic Robot ensure 360° full smooth welding.



Material

The tensile strength of aluminum alloy frame is more than 295MPa, some connecting parts are made of cast iron ≥ 200 MPa, and the net load is more than 300kg; one-off extrusion molding, and the surface undergoes the primary oxidation treatment.



Function

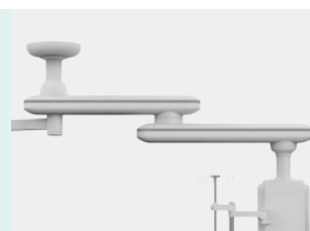
Braking System

The pneumatic brake system, using compressed air to brake hanging arms and medical pendants, one press to release the brake.



Suspension System

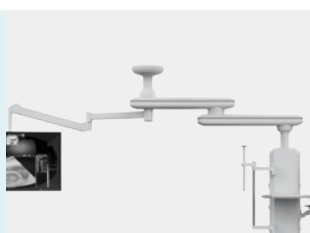
The rotation angle of medical pendant and hanging arm is 340°, built-in rotation limit device to prevent drift.



Configuration

Rotating Arm

The double rotating arms can cover 1700mm treatment radius, can be used flexibly during treatment, meeting the surgical needs of all departments.



Heavy - duty spring arm monitor holder

Equipped with double - joint monitor holder of Radius more than 1600mm and bearing range 6kg-12kg.



IV Pole with Four Hooks

The length of IV pole is 600mm, can be retractable, with four hooks, single hook can bear 4 kg.



Drawer

Silent self-priming track, no damage after 10,000 times push-pull tests, and the handle position is integrally formed by pressing with mould.



Instrument Platform

The size of the table top is 450*500mm, and the height of table surface can be adjusted. The table top is made of aluminum alloy panel with iron square tube inside, can bear ≥ 50 KG; with external aluminum alloy hanging frame.



Medical Gas

It is equipped with medical gas on both sides of the cabinet and column. The following configurations can be customized,
1. The number of medical gas
2. Interface standard and position
Gas port adopts secondary seal, three states (on, off, pull), support maintenance operations while it is working.



Equipotential Socket

Reduce the potential difference between indirect contact voltage and different metal parts.



Endoscope Stand

A temporary access device (hanging type) for a needle holder of an endoscope.



As the circumstance of printing, the photos might have minor difference on color, tactile from real products.
As the update of design and improvement, parameters and outlook of products might change, thanks for understanding.

Healthward



 17800 CASTLETON ST STE 180.CITY OF INDUSTRY CA 91748

 +1 (603) 416-3063 ·  24/7

 export@health-ward.com

 www.health-ward.com



General catalogue