



# HW-LZD50A

INTEGRAL REFLECTION  
OPERATING LAMP



# HW-LZD50A

## FEATURES AND HIGHLIGHTS

Integral reflection operation lamp can widely be used in diversified operation occasion to meet the demand of the illumination, and it is the ideal illumination instrument of the modern operating theater.



### Technical parameters

▪ Diameter of lighthead (mm):	500
▪ Illumination at 1m (Lux):	160000
▪ Brightness control range:	20 levels adjustable
▪ Color Temperature (Kelvin):	4500±250
▪ Color Rendering Index (CRI):	≥85
▪ Temperature rise (Surgeon head)(°C):	≤1
▪ Temperature rise (surgical field)(°C):	≤1
▪ Total Irradiance Ee (W/m2):	≤600
▪ Radiant Power Ee/Ec (mW/m2lux):	≤4
▪ Effective Focusing Depth (cm):	60-120
▪ Lighting Spot Size (cm):	16-28
▪ L1+L2 depth of illumination (cm):	≥120
▪ Bulb Type:	Halogen

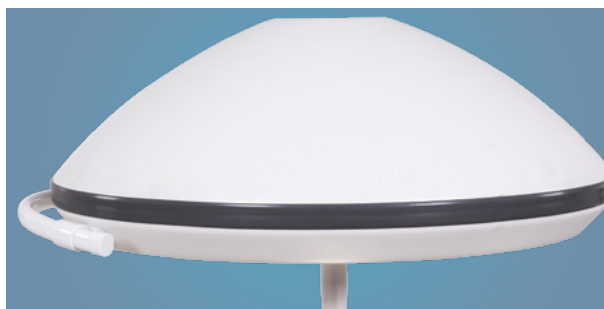
▪ Bulb Brand:	OSRAM
▪ Bulb Quantity:	2
▪ Bulb Power (w):	150
▪ Average Bulb Life (hours):	≥1500

### Technical configuration

<input checked="" type="checkbox"/> Rotating arm parts	1 set
<input checked="" type="checkbox"/> Balance arm	1 set
<input checked="" type="checkbox"/> Main light	1 set
<input checked="" type="checkbox"/> Auxiliary light	1 set
<input checked="" type="checkbox"/> handle	1 pc
<input checked="" type="checkbox"/> fuse	2 pcs

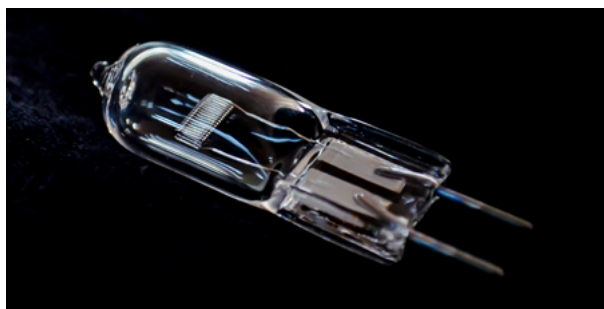
## Material technology

The lampshade shell is made of high-quality aluminum alloy. The surface adopts the high-voltage electrostatic spraying process, and the imported environmentally friendly antibacterial plastic powder that used to ensures that the product meets the requirements of surgical hygiene. Also, this product has matte surface and no glint.



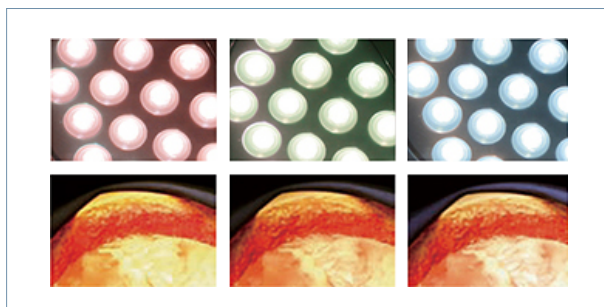
## Bulb

It uses Osram imported lamp beads, the average service life is up to 1500 hours.



## Color temperature&illumination

The color temperature is  $4500 \pm 250\text{K}$ , the illuminance can reach 180,000 Lux, which can realize 20 levels adjustable. While satisfying high illuminance, the well-designed color temperature correction system provides a color temperature close to 4500K in natural daylight, ensuring that the surgeon can clearly and accurately identify the color of blood vessels and nerve bundles in the operation area.



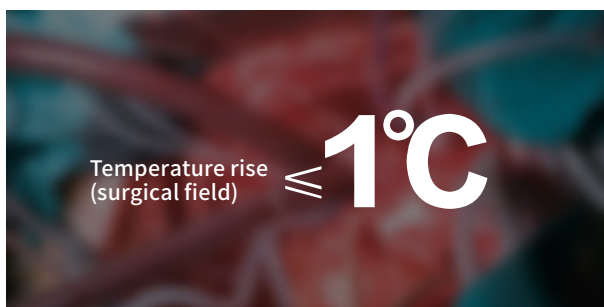
## Color rendering index

The color rendering index is as high as 85, which truly reflects the color of human tissues. It is suitable for various surgical scenes and greatly reduces the visual fatigue of medical staff due to long-term operations.



## Temperature rise (surgical field)

Temperature rise (surgical field):  $\leq 1^\circ\text{C}$ , this can avoid tissue drying due to high temperature and rapid blood clots at the wound, which will affect the operation.



## Lens reflection system

The mirror surface applies special technology & oxidation & electrolysis new technology, which prolongs the life of more than 5 times than the coating reflection system, does not fade, and does not drop the oxide film. There are more than 5280 lenses, making the surgical field truly shadowless. The advanced color temperature compensation technology provides a color temperature that is closer to natural daylight and evenly covers the entire surgical area, ensuring that the surgeon can clearly and accurately identify the color of blood vessels and nerve bundles in the surgical area.



## Lamp arm structure

The spring arm suspension system has six groups of universal directions and the 360° joint linkage is designed in an all-round way. It is completely positioned accurately and completely solves the drift.



## Standby light source system

Assuming that the main lamp has a light source failure during the operation, the system will automatically switch the standby bulb mode within 0.2 seconds, the light intensity and the operation area will not be affected at all, ensuring the normal operation of the operation. The panel has a main light failure indicator to remind you to replace the bulb in time after the operation.



## Back up battery

Optional back up battery can keep the operating lamp working for 3-4 hours in case of power failure to deal with various special situations.



## Remote control

Infrared remote control makes the operation more convenient.



As the circumstance of printing, the photos might have minor difference on color, tactile from real products.  
As the update of design and improvement, parameters and outlook of products might change, thanks for understanding.

# Healthward



 17800 CASTLETON ST STE 180.CITY OF INDUSTRY CA 91748

 +1 (603) 416-3063 ·  24/7

 export@health-ward.com

 www.health-ward.com



General catalogue