



HW-LLD0505C

LED OPERATION LAMP



HW-LLD0505C

FEATURES AND HIGHLIGHTS

The LED surgical shadowless lamp is composed of multiple lamp bulbs. The bulb has a longer life than the traditional shadowless lamp. It is round or petal-shaped. It is fixed on the balance arm suspension system. It is stable in positioning and can be moved vertically or cyclically. It can meet different heights during surgery. The petal-shaped surgical shadowless lamp is also a kind of LED. It is introduced separately because the lamp cap is petal-shaped and has a special shape.



Technical parameters

▪ Diameter of lighthouse (mm):	650/650
▪ Illumination at 1m (Lux):	180000/180000
▪ Brightness control range:	0-100% stepless adjustment
▪ Color temperature (Kelvin):	4000-6000
▪ Color rendering index (CRI):	≥95
▪ Temperature rise (Surgeon head)(°C):	≤1
▪ Temperature rise (Surgical field)(°C):	≤1
▪ Total irradiance Ee (W/m2):	≤600+600
▪ Radiant power Ee/Ec (mW/m2lux):	≤4
▪ Effective focusing depth (cm):	60-130
▪ Lighting spot size (cm):	16-28
▪ L1+L2 depth of illumination (cm):	≥130
▪ Bulb type:	LED

▪ Bulb brand:	OSRAM
▪ Bulb quantity:	71+71
▪ Bulb power (w):	1
▪ Average bulb life (hours):	≥80000

Technical configuration

<input checked="" type="checkbox"/> Rotating arm	2 set
<input checked="" type="checkbox"/> Balance arm	2 set
<input checked="" type="checkbox"/> C-arm	2 set
<input checked="" type="checkbox"/> Handle	2 pcs

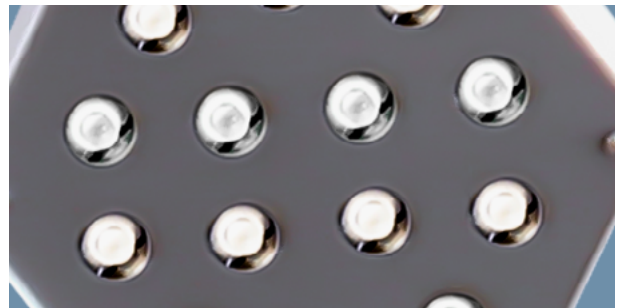
Material technology

The coating is sprayed with world-leading Akzo Nobel powder coating and anti-glare treatment, which meets the demanding requirements of surgical lighting. The design of the lamp holder focuses on reducing the turbulence. The streamlined lampshade of the whole lamp arm is carefully designed according to the principle of aerodynamics, which is fully in line with The standard of a modern new operating room.



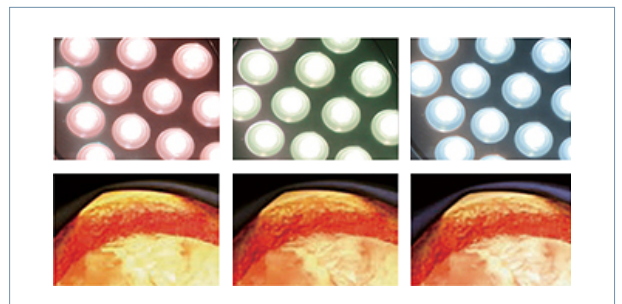
Bulb

The bulbs are imported from Germany OSRAM brand, using a special optical system, 360 ° uniformly illuminated on the observed object, no shadows, true reproduction of the organization color, and achieve constant color temperature under any light intensity conditions. The material is hard and no mercury pollution. Also, the emitted light does not contain infrared and ultraviolet radiation pollution.



Color temperature&illumination

Using a new type of LED cold light source, the illuminance can reach 180,000 Lux, which can realize stepless dimming and non-multi-speed adjustment; the color temperature is in the range of 4000K-6000K, and the stepless dimming is non-multi-step adjustment. While meeting the high illuminance, adjust the lighting parameters according to the needs of different surgeons, so that the surgeon's perception of light is soft and no glint.



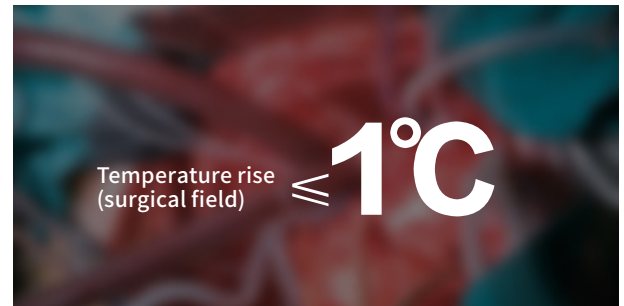
Color rendering index

The color rendering index reaches 95, which truly reflects the color of human tissues. It is suitable for various surgical scenes and greatly reduces the visual fatigue of medical staff due to long-term operations.



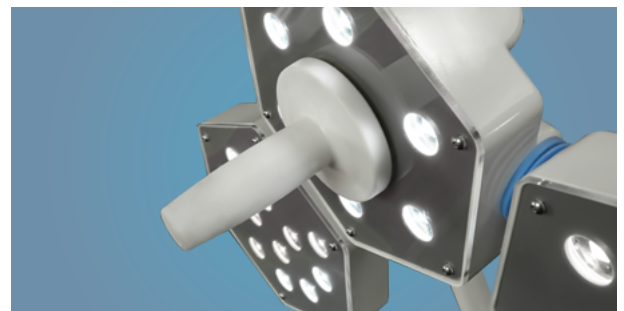
Temperature rise (surgical field)

LED cold light source has no infrared radiation, coupled with our nano-coated radiator, created our excellent heat dissipation effect. It solves the problem of the doctor's head temperature being too high during the operation, and creates a more comfortable operation environment for the doctor; it also effectively avoids the loss of water and infection of the surgical wound, which is conducive to the rapid recovery of the patient's wound after the operation.



Operating handle

The detachable disinfection handle is made of high-strength ABS, which can be disinfected and sterilized at a high temperature above 135°, ensuring the durability and reliability of the handle.



Other functions

It contains three modes of beauty, endoscopy, and deep cavity, which can be switched by one button.



As the circumstance of printing, the photos might have minor difference on color, tactile from real products.
As the update of design and improvement, parameters and outlook of products might change, thanks for understanding.

Healthward



 17800 CASTLETON ST STE 180.CITY OF INDUSTRY CA 91748

 +1 (603) 416-3063 ·  24/7

 export@health-ward.com

 www.health-ward.com



General catalogue