



HW-LLD0505A

LED OPERATION LAMP



HW-LLD0505A

FEATURES AND HIGHLIGHTS

The LED surgical shadowless lamp is composed of multiple lamp bulbs. The bulb has a longer life than the traditional shadowless lamp. It is round or petal-shaped. It is fixed on the balance arm suspension system. It is stable in positioning and can be moved vertically or cyclically. It can meet different heights during surgery. The petal-shaped surgical shadowless lamp is also a kind of LED. It is introduced separately because the lamp cap is petal-shaped and has a special shape.



Technical parameters

▪ Diameter of lighthead (mm):	705/705
▪ Illumination at 1m (Lux):	160000/160000
▪ Brightness control range:	0-100% stepless adjustment
▪ Color temperature (Kelvin):	3000-6700
▪ Color rendering index (CRI):	≥97
▪ Temperature rise (Surgeon head)(°C):	≤1
▪ Temperature rise (Surgical field)(°C):	≤2
▪ Total irradiance Ee (W/m2):	≤700+700
▪ Radiant power Ee/Ec (mW/m2lux):	≤4
▪ Effective focusing depth (cm):	130
▪ Lighting spot size (cm):	10-30
▪ L1+L2 depth of illumination (cm):	≥120
▪ Bulb type:	LED

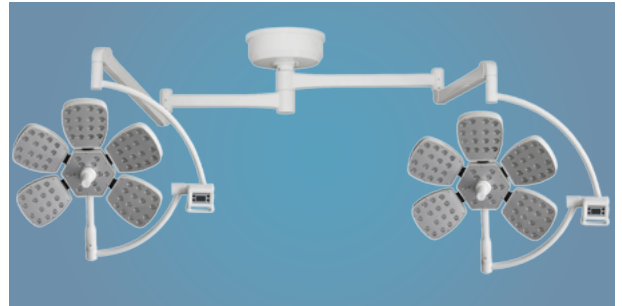
▪ Bulb brand:	OSRAM
▪ Bulb quantity:	92+92
▪ Bulb power (w):	1
▪ Average bulb life (hours):	≥60000

Technical configuration

<input checked="" type="checkbox"/> Rotating arm	2 set
<input checked="" type="checkbox"/> Balance arm	2 set
<input checked="" type="checkbox"/> C-arm	2 set
<input checked="" type="checkbox"/> Handle	2 pcs

Material technology

The coating is sprayed with world-leading Akzo Nobel powder coating and anti-glare treatment, which meets the demanding requirements of surgical lighting. The design of the lamp holder focuses on reducing the turbulence. The streamlined lampshade of the whole lamp arm is carefully designed according to the principle of aerodynamics, which is fully in line with The standard of a modern new operating room.



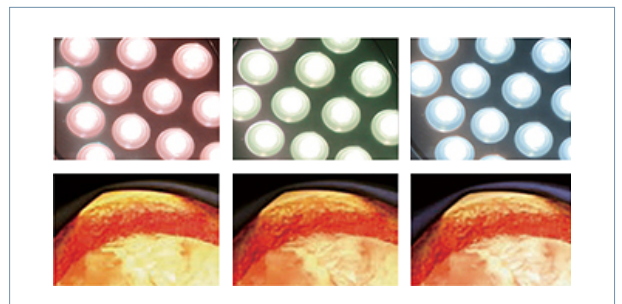
Bulb

The bulbs are imported from Germany OSRAM brand, using a special optical system, 360 ° uniformly illuminated on the observed object, no shadows, true reproduction of the organization color, and achieve constant color temperature under any light intensity conditions. The material is hard and no mercury pollution. Also, the emitted light does not contain infrared and ultraviolet radiation pollution.



Color temperature&illumination

Using a new type of LED cold light source, the illuminance can reach 160,000 Lux, which can realize stepless dimming and non-multi-speed adjustment; the color temperature is in the range of 3000K-6700K, and the stepless dimming is non-multi-step adjustment. While meeting the high illuminance, adjust the lighting parameters according to the needs of different surgeons, so that the surgeon's perception of light is soft and no glint.



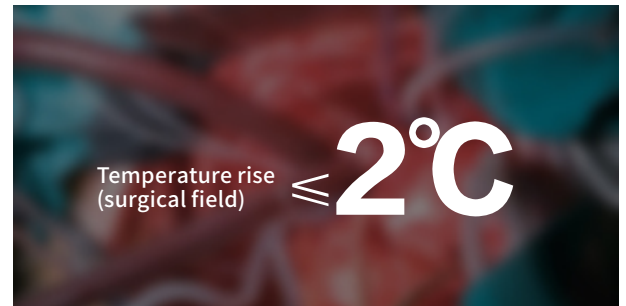
Color rendering index

The color rendering index reaches 97, which truly reflects the color of human tissues. It is suitable for various surgical scenes and greatly reduces the visual fatigue of medical staff due to long-term operations.



Temperature rise (surgical field)

Temperature rise(surgical field): $\leq 2^{\circ}\text{C}$, this can avoid tissue drying due to high temperature and rapid blood clots at the wound, which will affect the operation.



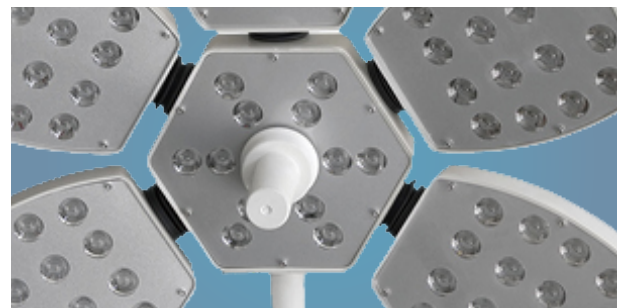
Control System

All the ABS controller system, using microcomputer digital integrated control system, equipped with lamp bead failure indicator alarm function.



Operating handle

The lighthouse torch is made of aluminum, which can release heat when the shadowless lamp is working. The middle-mounted disinfection handle can be detached at will, the temperature resistance is more than 134°C , and the high pressure resistance is more than 205.8kPa, which is convenient for high temperature and high pressure steam sterilization.



As the circumstance of printing, the photos might have minor difference on color, tactile from real products.
As the update of design and improvement, parameters and outlook of products might change, thanks for understanding.

Healthward



 17800 CASTLETON ST STE 180.CITY OF INDUSTRY CA 91748

 +1 (603) 416-3063 ·  24/7

 export@health-ward.com

 www.health-ward.com



General catalogue