

HW-EM201

SYRINGE PUMP



Healthward

Healthier
your life

HW-EM201

FEATURES AND HIGHLIGHTS

Accessories: host, remote control, power cord, user manual, warranty card, product certificate.

Application: The main application software is developed on the Linux platform, which is more secure and reliable. The function and technology are completely independently researched and developed, and can fully meet customers' future upgrade needs.

Other Functions: Automatic syringe specification recognition function: can be used for 5ml, 10ml, 20ml, 30ml, 50 (60) ml syringes. The manually adjustable precision function is more convenient for adjusting and ensuring precision requirements



Technical parameters

- Product weight gross weight 3kg net weight 2.3kg
- Injection modes speed mode, time mode, weight mode (2 types).
- Injection volume range 0.1~1999.9ml (in increments of 0.1ml)
- Cumulative volume range 9999.9ml (in increments of 0.1ml)
- Accuracy of injection speed within $\pm 2\%$ (not including the error of the syringe itself)
- Injection blockage Three levels of blockage alarm pressure (high, medium, low) can be selected according to clinical needs
- KVO speed (Keep vessels open) 0.1~5ml/h (adjustable in increments of 0.1 ml/h)
- Remote Control Function Distance range 0m--5m
- Working environment Temperature: +5°C~+40°C
- Relative humidity 20%~90%
- Storage environment Temperature -30°C~+55°C
- Atmospheric pressure 860hPa~1060hPa
- Safety level Class I CF equipment, built-in power supply, continuous operation with intermittent loading

Injection speed range: 50ml syringe:

0.1~1800ml/h (0.1~999.9ml/h increment is 0.1ml/h
1000~1800ml/h increment is 1ml/h)
30ml syringe: 0.1~900ml/h
20ml syringe: 0.1~600ml/h
10ml syringe: 0.1~300ml/h
5ml syringe: 0.1~150ml/h

Fast forward speed:

50ml syringe: 1800ml/h (Bolus speed 1200ml/h)
30ml syringe: 900ml/h (Bolus speed 600ml/h)
20ml syringe: 600ml/h (Bolus speed 400ml/h)
10ml syringe: 300ml/h (Bolus speed 200ml/h)
5 ml syringe: 150ml/h (Bolus speed 100ml/h)

Alarm function:

alarm for injection completion, syringe empty, injection near, injection blockage, syringe falling off, syringe installation error, battery low (undervoltage alarm), AC power disconnection, stop timeout prompt.

Design

Humanized integrated design, exquisite appearance, precise injection, and powerful functions.



Shell Material

New ABS engineering plastic injection molding.



Screen Design

4.3-inch LCD screen, support Chinese and English language. Equipped with backlight, it can be used in various lighting conditions. The operating interface is presented at a 45-degree angle, which enhances the clarity of the visual effect.



Internal Structure

The aluminum-magnesium alloy bracket is stable and reliable, has good shock resistance and is easy to move.



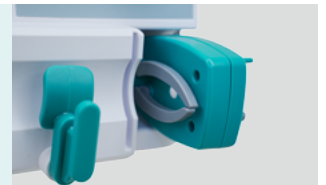
Handle

Fixed handle design, comfortable, stable and easy to move.



Syringe Fixture

Using an open-and-close design, it is easy to clamp the syringe, which can accommodate a 60mm syringe and is more in line with clinical operation.



Operation Interface

Interface display conten: time, battery capacity, injection status, mode, injection speed, injection volume, cumulative volume, injection time, syringe specification, alarm volume, block pressure, precision, weight, medication amount, dose, and liquid volume.



Remote Control Function

It can remotely control devices, directly input numbers to adjust parameters such as speed, infusion time, and medicine volume, which can save time and effort for medical staff.



Clock Display Function

It is convenient to memorize and check time.



Alarm Function

The triple alarm system of sound, light and screen, three levels of adjustable volume.



As the circumstance of printing, the photos might have minor difference on color, tactile from real products.
As the update of design and improvement, parameters and outlook of products might change, thanks for understanding.

Healthward



 17800 CASTLETON ST STE 180.CITY OF INDUSTRY CA 91748

 +1 (603) 416-3063 ·  24/7

 export@health-ward.com

 www.health-ward.com



General catalogue