

HWX14

EXAMINATION TABLE



Healthward

Healthier
your life

HWX14

FEATURES AND HIGHLIGHTS



Technical parameters

- External Size (LxWxH) 1940x700x(500-900)mm
- Back-rest Adjustment 0-75°

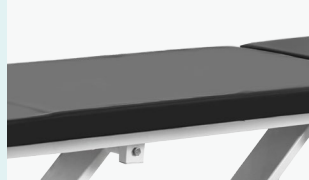
Technical configuration

- Hydraulic Pump 1pc
- Adjustable Air Spring 2pcs
- 5" Covered Castors 4pcs
- Hydraulic Pedal 2pcs



Leather

Flame retardant, yellow resistance, mildew resistance, bending resistance, 100,000 times wear resistance.



Sponge

Flame retardant, 4 cm thickness, high-density foam, density 30 kg/m³.



Metal Material

Baosteel from Fortune Global 500. Panasonic Robotic ensure 360° full smooth wedding.



Painting

11 Process epoxy painting, ASTM testing anti-bacterial, paint thickness 0.12mm, brightness 60°, paint can resist 50kg impact



Frame

1.2-1.5 mm Thickness powder coated steel frame, 250 kg bear loading.



Castors

4 pcs 5" Covered casters with brake



Hydraulic system

Hydraulic system is without wear or tear after 2000 time use.





As the circumstance of printing, the photos might have minor difference on color, tactile from real products.
As the update of design and improvement, parameters and outlook of products might change, thanks for understanding.

Healthward



 17800 CASTLETON ST STE 180.CITY OF INDUSTRY CA 91748

 +1 (603) 416-3063 ·  24/7

 export@health-ward.com

 www.health-ward.com



General catalogue