

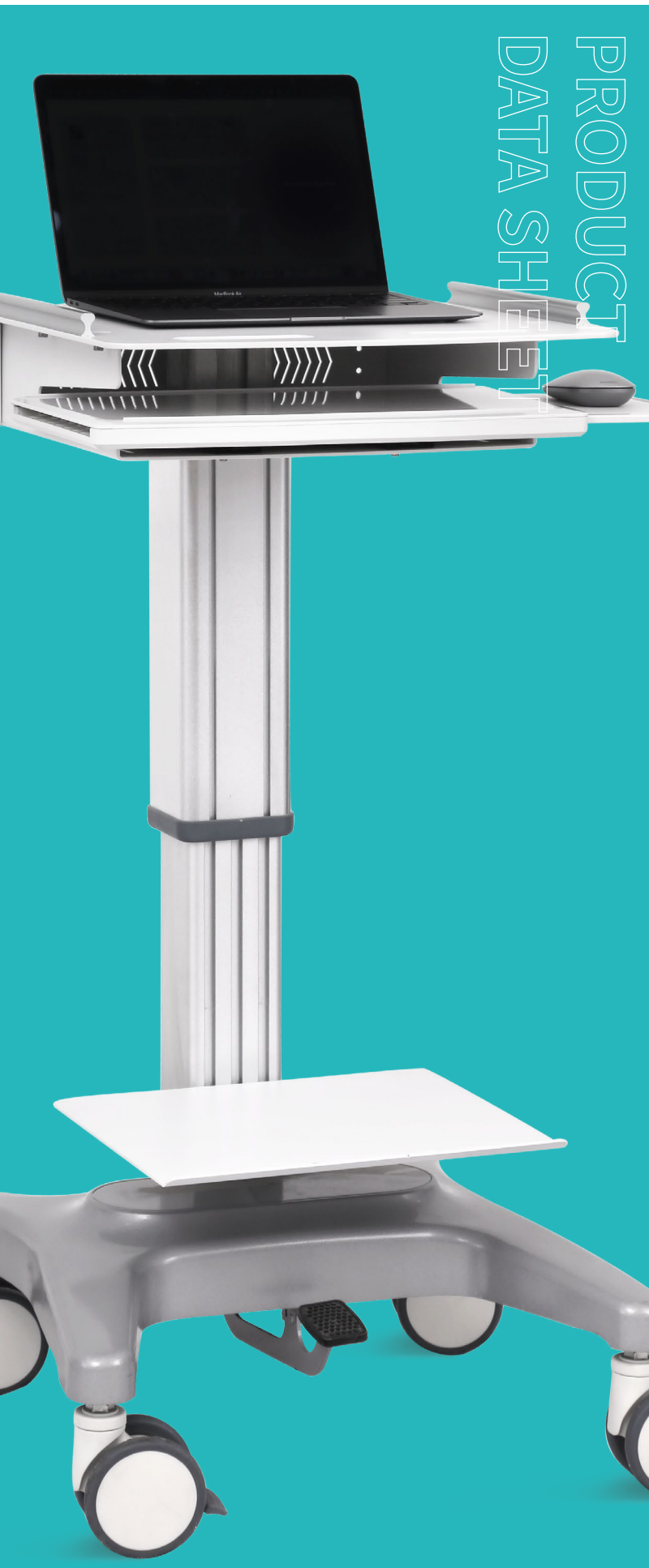


HWR-R03

LAPTOP CART



Healthward



HWR-R03

FEATURES AND HIGHLIGHTS

Product Introduction

The mobile doctor workstation based on wireless network integrates highly integrated computer, wireless communication, intelligent power management, mobile management technology, and is suitable for a variety of clinical work environments; whether it is outpatient, emergency, inpatient ward, operating room or ICU, it can help clinical Medical workers realize intelligent mobile ward rounds.

Technical Parameters

▪ Dimensions L×W×H	530×520×850mm
▪ Work table L×W	445×410mm
▪ Sub-table size L×W	210×200mm
▪ Keyboard base size L×W	440×250mm
▪ Machine weight	21kg
▪ Lifting size	table lifting size 30mm
▪ Caster design	4 inch medical grade silent wheel



Material

The table top and column are made of aviation-grade aluminum alloy, the base and handle are made of one-time molding all-cast aluminum material, the whole car adopts high-voltage electrostatic spraying process, and imported environmentally friendly antibacterial plastic powder is used to ensure that the product meets the medical and health requirements, and the surface is matte and non-dazzling.



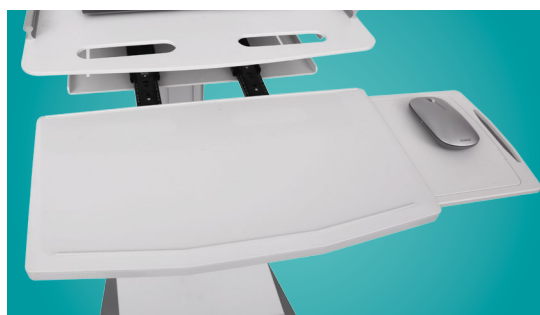
Table Top

Aviation grade aluminum alloy table, easy to clean and anti-corrosion, with partition design on both sides to prevent items from falling.



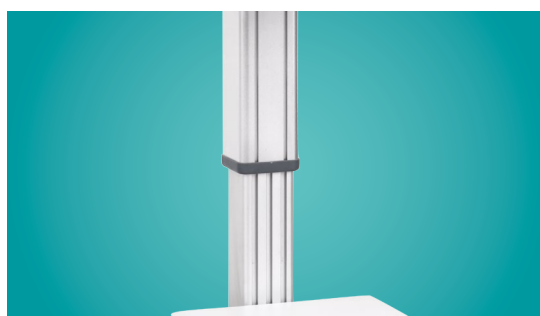
Keyboard Subsurface

The pull-out sub-table can place the keyboard and documents, and provides a hidden extended mouse panel.



Lower Column

The column is equipped with a professionally adjusted air rod, which is easy to rise and fall, and can be quickly adjusted to a suitable height, adapting to different sitting and standing postures, with a stroke of up to 20cm. And optional electric lift.



Chassis

All-metal stretched X-shaped chassis, one-time cast aluminum molding, to ensure the center of gravity and level of the vehicle.



Casters

4-inch dual-wheel medical grade silent wheels, all with brakes, after tens of thousands of kilometers of long-term durability tests, flexible and durable.





As the circumstance of printing, the photos might have minor difference on color, tactile from real products.
As the update of design and improvement, parameters and outlook of products might change, thanks for understanding.

Healthward



 17800 CASTLETON ST STE 180.CITY OF INDUSTRY CA 91748

 +1 (603) 416-3063 ·  24/7

 export@health-ward.com

 www.health-ward.com



General catalogue