



HWR-IT750

INSTRUMENT TROLLEY



Healthward[™]

Healthier
your life

HWR-IT750

FEATURES AND HIGHLIGHTS

Technical parameters

- External size (LxWxH) 750x475x920 mm
- Castors 125 mm



Material

Steel and aluminum structure inside, ABS materials outside, easy to clean. Powder coated columns.



Table top

Guardrails on top of trolley is made of stainless steel. Concave design table top with soft glass to avoid possibly falling down during movement.



Gantry infusion frame

Top of the trolley : Telescopic gantry infusion frame with six hooks. Stainless steel material with good load-bearing capacity.



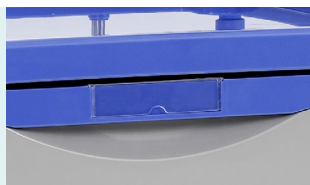
Drawers

Drawer with 3*3 abs inserts inside, which can be separated freely as required.



Drawer card holder

Card insert from downside, easy keep clean.



Trash can

Two trash cans for waste sorting.



Castor

High-quality medical silent universal castors, flexible and light to drive, smooth steering, wear-resistant, two with brake, can be easily braked in any state.





As the circumstance of printing, the photos might have minor difference on color, tactile from real products.
As the update of design and improvement, parameters and outlook of products might change, thanks for understanding.

Healthward



 17800 CASTLETON ST STE 180.CITY OF INDUSTRY CA 91748

 +1 (603) 416-3063 ·  24/7

 export@health-ward.com

 www.health-ward.com



General catalogue