

HWR-CT232

CLINICAL TROLLEY



Healthward

Healthier
your life

HWR-CT232

FEATURES AND HIGHLIGHTS

Technical parameters

- Size (LxWxH) 780×475×1000 mm

Technical configuration

<input checked="" type="checkbox"/> File Box	1pc
<input checked="" type="checkbox"/> Plastic Basket	2pcs
<input checked="" type="checkbox"/> Sharps Boxes	2pcs
<input checked="" type="checkbox"/> Trash Can	2pcs
<input checked="" type="checkbox"/> Castor	4pcs



Table Top

Guardrails on top of trolley is made of stainless steel, table top with soft glass, avoid possible movement and fall down during movement of trolley.



Material

Steel and aluminum structure inside, ABS materials outside, easy to clean.



Push Handle

With push handle on both side, convenient for pushing easily.



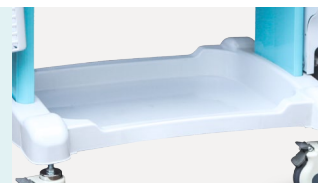
Drawer

1 layer small drawer, 2-3 layer middle drawer, can put different sizes of medicine boxes and other medical materials, and equipped with central control lock.



Storage Shelf

Storage box which is designed fixed on the frame, large volume, easy to store and take out items, easy to clean.



Drawer Inside Dividers

With abs inserts inside, which can be separated freely as required.



Drawer Card Holder

Card insert from downside, easy keep clean.



File Box

Side attached file box, for storage of paper work.



Plastic Basket

With two plastic basket, there are two 2-liter Sharps boxes in the basket.



Trash Can

Two trash cans in different color with lid, controlled by foot switch.



Castor

4 nylon wheels Ø100 mm with non-marking tires and plain bearings, two with brakes.



As the circumstance of printing, the photos might have minor difference on color, tactile from real products.
As the update of design and improvement, parameters and outlook of products might change, thanks for understanding.

Healthward



 17800 CASTLETON ST STE 180.CITY OF INDUSTRY CA 91748

 +1 (603) 416-3063 ·  24/7

 export@health-ward.com

 www.health-ward.com



General catalogue