



# HWGT3k

MANUAL ORTHOPEDIC  
TRACTION BED

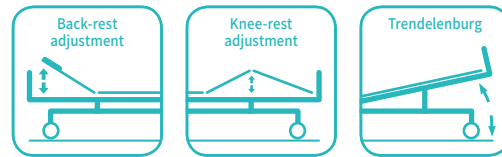


**Healthward**

Healthier  
your life

# HWGT3k

## FEATURES AND HIGHLIGHTS



### Technical parameters

▪ External size (LxWxH)	2270x970x500 mm
▪ Mattress platform	1925x830 mm
▪ Safe working load	250 kg
▪ Back-rest adjustment	0-75° (±10°)
▪ Knee-rest adjustment	0-35° (±10°)
▪ Trendelenburg	0-6°



### Technical configuration

<input checked="" type="checkbox"/> Manual cranks	3 pcs
<input checked="" type="checkbox"/> 5" double side castors, central locking	4 pcs
<input checked="" type="checkbox"/> Central locking pedal	2 pcs
<input checked="" type="checkbox"/> Aluminium alloy ABS head and foot board with safe lock	1 set
<input checked="" type="checkbox"/> Aluminium alloy foldable side rail	1 set
<input checked="" type="checkbox"/> IV Pole	1 set
<input checked="" type="checkbox"/> IV Pole Prevision	4 pcs
<input checked="" type="checkbox"/> Drainage Hook	2 pcs
<input checked="" type="checkbox"/> Aluminium balkan frame	1 set



**Steels | Painting**

Baosteel from Fortune Global 500. 11 Process epoxy painting, ASTM testing anti-bacterial, paint thickness 0.12 mm, brightness 60°, paint can resist 50 kg impact.

**Welding | Chassis**

Panasonic robotic ensure, 360° full smooth welding Solid bed base made of 5.0 mm stamped rotating plate.

**Balkan Frame**

Aluminum Balkan Frame, which can adjust the longitudinal, lateral and height positions in all directions, and can accurately adjust the most comfortable posture of the patient.

**Hand Control**

Retractable hand crank, 100,000 times remaining intact  
Extreme protection device, sounds when tipped to the max position, Strong pallets to increase the bed.

**Bumper Cover**

Reduce the impact of the collision, safe and slinky, protect the bed and patient during transportation.

**Platform**

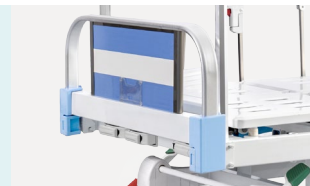
Stamping forming platform, smooth surface no welding scar, bearing 250KG load. Option resin X-ray translucent platform.

**Guardrail**

Aluminum alloy side rail, 6-staff, collapsed type with safe lock.

**Head & foot board**

Aluminium alloy flat tube, MDF material fire-proof plate. size of the head&foot board can be customized.

**Wheels**

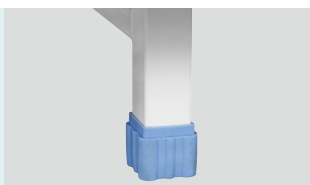
Castors with TPR tire, no worn-out after running 30KM, united forming without bolts.  
Pass Dynamic test: Bearing 120kg run 30KM and pass obstacles 500time.

**Brake**

Three position braking system, transporting can maintain a straight line.  
ABS cover on castors joint, prevent the dust or hair stuck in. Easy to clean.

**Anti-slip bed feet cover**

Non-skid, more stable in the ground.

**Drainage Hooks**

Mobile plastic drainage hooks.

**IV pole**

Stainless Steel Column with plastic hook.



As the circumstance of printing, the photos might have minor difference on color, tactile from real products.  
As the update of design and improvement, parameters and outlook of products might change, thanks for understanding.

# Healthward



 17800 CASTLETON ST STE 180.CITY OF INDUSTRY CA 91748

 +1 (603) 416-3063 ·  24/7

 export@health-ward.com

 www.health-ward.com



General catalogue