

HWE908

ATOMIZING TABLE FOR CHILDREN



Healthward

Healthier
your life

HWE908

FEATURES AND HIGHLIGHTS

Technical parameters

▪ Overall size	1584x600x1100mm
▪ Gross weight	50kg



Design

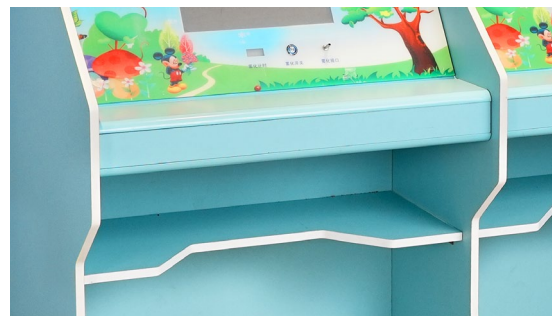
The design of the cartoon-style is in line with the psychological needs of children, and can help them feel more relaxed and cooperate with therapy. Additionally, independent position design can avoid crowding and cross-infection of nebulized medications.



Material

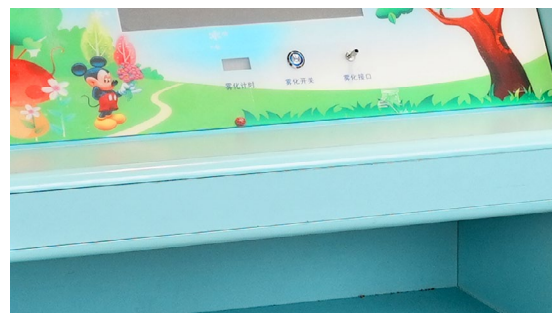
Using E1-grade high-quality environmentally friendly particleboard, formaldehyde emission $\leq 1.5\text{mg/L}$, no volatile organic compounds (TVOC), treated with moisture-proof, insect-proof, and anti-corrosion measures, high strength, not easy to deform, in line with GB/T4897-2015 "Particleboard for Interior Decoration" and GB/T35601-2017 "Green Product Evaluation of Wood-based Panels and Wood Flooring" standards.

The eccentric connecting part of the three-in-one has a compressive strength of $\geq 300\text{N}$, which complies with the standard GB/T28203-2011 "Technical requirements and test methods for furniture connecting parts".



Surface treatment

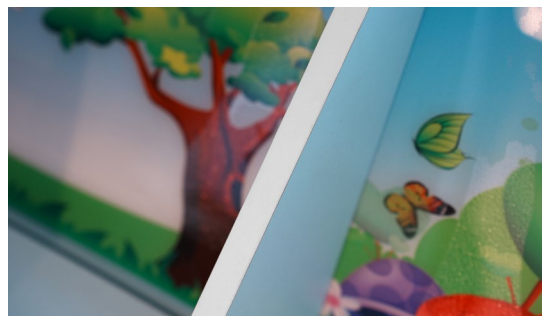
Using E1-grade high-quality melamine impregnated paper for decoration, formaldehyde emission $\leq 1.5\text{mg/L}$, volatile content 5-9%, pre-curing degree 10-70%, with advantages of wear resistance, scratch resistance, high temperature resistance, easy to clean, acid and alkali resistance, etc., in line with LY/T1831-2009 "Decorative Paper for Laminated Wood-based Panels" standard. The decoration is treated with antibacterial treatment, reaching the GB21551.2-2010 standard, with an antibacterial rate of 99.99% against Escherichia coli and Staphylococcus aureus.



Edge banding | Hot melt adhesive banding

Using high-quality PVC edge banding, with no formaldehyde emission, no deformation, no cracking, and seamless, complies with QB/T4463-2013 "Technical Requirements for Edge Banding for Furniture" standard.

The edge banding is bonded with hot melt adhesive: using high-quality hot melt adhesive, free of volatile organic compounds such as benzene, with strong bonding strength and high stability, complies with HJ2541-2016 "Technical Requirements for Adhesives for Environmental Labeling Products" standard.



Safety corner

The "safety corner component" made of 6063 industrial aluminum profile with a wall thickness of 1.2mm or more, is installed at all exposed corners of the furniture. It has a compressive and deformation resistance, and is treated with surface foam electrostatic spraying. It is combined with the board using standard three-in-one connecting parts.



Atomized tabletop | Player

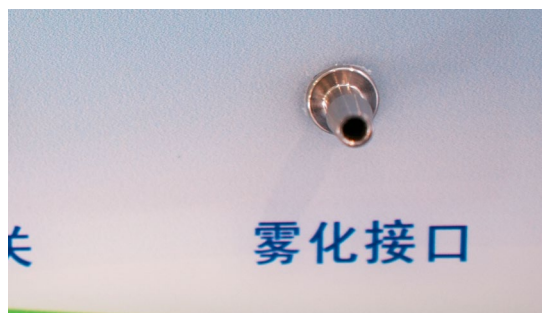
The atomized tabletop uses a full-screen acrylic color cartoon pattern panel, with soft colors and not easy to break.

The 14.1-inch digital player has 8GB of memory and stored children's cartoons (which can be stored or deleted by yourself). It will automatically play when turned on. The video animation player reduces children's anxiety to do misting. The colorful layout is more attractive to children and reduces their aversion to hospitals.



Atomizer

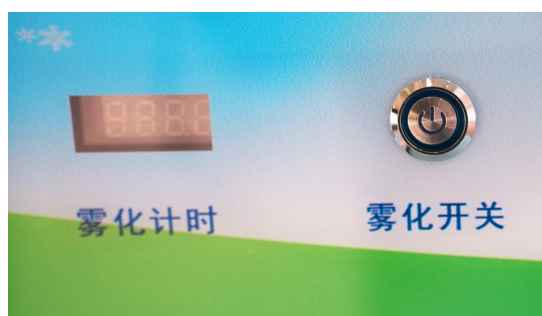
Built-in Shandong "Hao Kang" atomizer connected with the stainless steel atomizer transfer interface on the face screen. The screen has a mist switch button. After connecting the mist mask to the mist adapter, press the button to start misting. The screen will play cartoon animations and start the countdown timer. The misting machine and animation player will automatically turn off after 15 minutes.



Control section

One-button start for the mist switch, with simple and fast operation. It uses medical-grade stainless steel 304 nozzles to prevent rust and facilitate cleaning.

It has a built-in automatic timing device for easy viewing of misting time. It will automatically power off after 15 minutes of operation. The screen has a timing display window.





As the circumstance of printing, the photos might have minor difference on color, tactile from real products.
As the update of design and improvement, parameters and outlook of products might change, thanks for understanding.

Healthward



 17800 CASTLETON ST STE 180.CITY OF INDUSTRY CA 91748

 +1 (603) 416-3063 ·  24/7

 export@health-ward.com

 www.health-ward.com



General catalogue