

HWE005

TRANSFUSION CHAIR



HWE005

FEATURES AND HIGHLIGHTS

Technical parameters

▪ Seat Size (LxWxH)	750×1000×1050 mm
▪ Bed Size (LxWxH)	750×1550×450 mm

Technical configuration

<input checked="" type="checkbox"/> Anti-slip Feet Cover	4pcs
<input checked="" type="checkbox"/> Wooden Armrest	2pcs
<input checked="" type="checkbox"/> IV Pole Previsions	2pcs
<input checked="" type="checkbox"/> IV Pole	1set
<input checked="" type="checkbox"/> Utility Basket	1pc



Design

Scientific design, ergonomics, simple structure, convenient operation, applied to infusion and patient rest. Can pull out to be a bed.



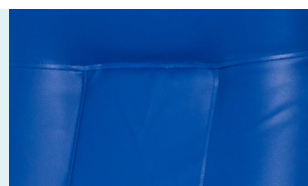
Material

Plastic steel frame, strong stability, durable use, beautiful appearance, comfortable texture, convenient cleaning.



Back and Seat Plate

The back plate and seat plate are made of high-quality artificial leather and sponge, providing a safe, comfortable and warm infusion experience.



Armrest

The handrail is made of imported mountain wood, resin paint, and the shape is generous.



Footrest

The pedal board is welded with high-quality steel pipes, which is well-made, sturdy and durable, and has strong rust resistance and fire resistance.



Shelf

There is a shelf on the side of the chair, which is convenient for the infusion person to put their belongings. Carbon steel structure, strong bearing capacity.



Foot Pad

Beautiful appearance, easy to use and has the functions of anti-slip, anti-collision, anti-shock, temperature resistance, noise reduction, etc.



IV Pole

Full stainless steel IV pole, bearing 15 kg.





As the circumstance of printing, the photos might have minor difference on color, tactile from real products.
As the update of design and improvement, parameters and outlook of products might change, thanks for understanding.

Healthward



 17800 CASTLETON ST STE 180.CITY OF INDUSTRY CA 91748

 +1 (603) 416-3063 ·  24/7

 export@health-ward.com

 www.health-ward.com



General catalogue