



HWA302

ELECTRIC OPERATING TABLE



Healthward

Healthier
your life

HWA302

FEATURES AND HIGHLIGHTS



Technical parameters

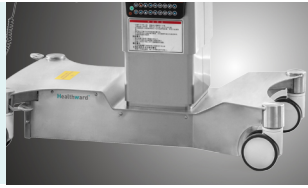
External size (LxWxH):	2150x555x(700-1000)mm
Reverse trendelenburg:	0-25°
Trendelenburg:	0-25°
Lateral tilt left/right:	0-25°
Head plate up/down:	45°/90°
Head plate Height adjustment:	70mm
Back plate up/down:	70°/22°
Leg plate up/down:	15°/90°
Leg plate outwards:	90°
Kidney bridge elevation:	0-110mm
Horizontal sliding:	0-350mm
Safe working load:	275kg
X-rays translucent:	YES
C-arm compatible:	YES
Multi-functional orthopedic frame:	YES

Technical configuration

<input checked="" type="checkbox"/> Bed frame	1pc
<input checked="" type="checkbox"/> Mattress	1set
<input checked="" type="checkbox"/> Anesthesia screen frame	1pc
<input checked="" type="checkbox"/> Shoulder holder	2pcs
<input checked="" type="checkbox"/> Arm holder	2pcs
<input checked="" type="checkbox"/> Leg support	2pcs
<input checked="" type="checkbox"/> Foot support	2pcs
<input checked="" type="checkbox"/> Hand controller	1pc
<input checked="" type="checkbox"/> Sliding block	8pcs
<input checked="" type="checkbox"/> Spanner	5pcs

Material

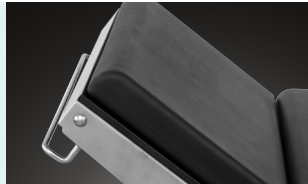
The base material for the table is high thickness 304 stainless steel, seamessed welding by robot, with modern appearance and more stable.

**Mattress**

Polyurethane foam mattress, waterproof and seamless, avoid liquid in. The connection between table and mattress is buckle joint, easy to disassemble and install, easy to clean.

**Head plate**

Head plate is with imported gas spring for easy control.

**Kidney bridge**

Manual kidney bridge, operate by head side rocker, more convenience.

**Horizontal sliding**

Extra horizontal sliding, distance 350mm high strength phenolic resin table surface, C-arm and X-ray compatible.

**Dual control system**

All functions controlled by both hand controller or control panel on table base column. With action LCD display on hand controller, easy to operate. With control panel on table base column, in case of emergency hand controller failure.

**Leg plate**

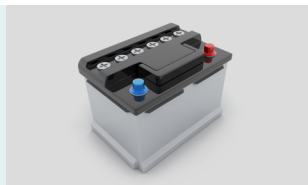
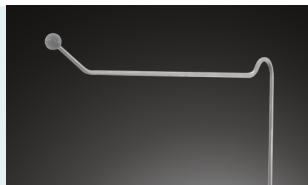
The up and down folding actions of the leg plate are all completed by electric. The leg plate is removable, effortless and smooth.

**Castors**

HAION brand castors, each load bearing is 250kg, smooth and noiseless movement, with longer service life. Pedal brake, easy to move and lock. Unique switch design.

**Battery could support**

Battery could support about 80-120 complete operation cycles. Working time could be last for one week according to useage and help to keep the operating table runing in the event of power failure.

**Armrest****Anesthesia Frame****Leg Crutches****Shoulder Support****Body Supporter**

Product data sheet

Professional functions

Lowest position of table top
700mm



Highest position of table top
1000mm



Back plate up
0°-70°



Back plate down
0°-22°



Reversed trendelenburg
0°-25°



Trendelenburg
0°-25°



Right lateral tilt
0°-25°



Left lateral tilt
0°-25°



Head plate upward
0°-45°



Head plate downward
0°-90°



Leg section evagination
0°-90°



Leg plate up/down
-15°-90°



Head plate Height adjustment
0-70mm



Kidney bridge elevation
0-110mm



Horizontal sliding
0-350mm



As the circumstance of printing, the photos might have minor difference on color, tactile from real products.
As the update of design and improvement, parameters and outlook of products might change, thanks for understanding.

Healthward



 17800 CASTLETON ST STE 180.CITY OF INDUSTRY CA 91748

 +1 (603) 416-3063 ·  24/7

 export@health-ward.com

 www.health-ward.com



General catalogue