



HWA202

ELECTRIC OPERATION TABLE

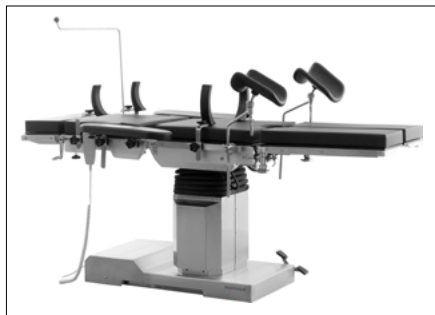


Healthward

Healthier
your life

HWA202

FEATURES AND HIGHLIGHTS



Technical parameters

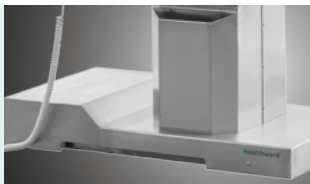
External size (LxWxH):	2000x500x(750-1050)mm
Reverse trendelenburg:	0-22°
Trendelenburg:	0-25°
Lateral tilt left/right:	0-20°
Head plate up/down:	45°/90°
Back plate up/down:	70°/35°
Leg plate down:	0-90°
Leg plate outwards:	0-90°
Kidney bridge elevation:	0-80mm
Horizontal sliding:	0-300mm
Safe working load:	360kg

Technical configuration

<input checked="" type="checkbox"/> Arm support	2 pcs
<input checked="" type="checkbox"/> Leg support	2 pcs
<input checked="" type="checkbox"/> Body Support	2 pcs
<input checked="" type="checkbox"/> Shoulder Support	2 pcs
<input checked="" type="checkbox"/> Slider	7 pcs
<input checked="" type="checkbox"/> Tightener	2 pcs
<input checked="" type="checkbox"/> Anaesthetic Screen	1 pc
<input checked="" type="checkbox"/> Hand controller	1 pc
<input checked="" type="checkbox"/> Handwheel	1pc

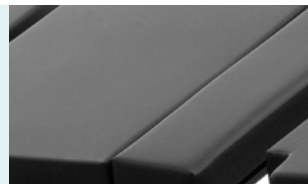
Material

The chassis cover is made of high quality Ni-Cr stainless alloy steel by seamless robot welding, corrosion resistance, disinfection resistance, rust-proof and durable.



Mattress

Removable memory mattress, good rebound resilience, anti-static electricity and anti-microbial.



Control System

Electric-hydraulic control system, non-gear structure, all functions are controlled by the hand controller.



Braking system

Mechanical brake device at the side of the base, with fixed or moving function, flexible and reliable.



Hand controller

All functions are controlled by the hand controller.



Kidney bridge

Kidney bridge is adjusted by the hand wheel at the side of head board, more convenient, with separate mattress.



Battery could support

Battery could support about 50-80 complete operation cycles. Working time could be last for one week according to useage and help to keep the operating table running in the event of power failure.



Horizontal movement

300mm horizontal movement function, with high strength phenolic resin table top, could be used for X-ray and C-arm.



Leg plate

The up and down folding of the leg plate is manually controlled by the high strength gear, which makes the operation more effort-saving and smooth.



Armrest



Anesthesia Frame



Leg Crutches



Shoulder Support



Body Supporter



Professional functions

Lowest position of table top

750mm



Highest position of table top

1050mm



Back plate up

0°-70°



Back plate down

0°-35°



Reversed trendelenburg

0°-22°



Trendelenburg

0°-25°



Right lateral tilt

0°-20°



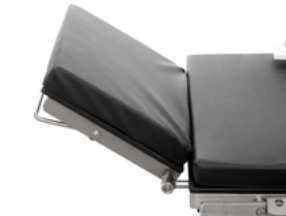
Left lateral tilt

0°-20°



Head plate upward

0°-45°



Head plate downward

0°-90°



Leg section evagination

0°-90°



Leg plate up/down

-45°-90°



Kidney bridge elevation

0-80mm



Horizontal movement

0-300mm




As the circumstance of printing, the photos might have minor difference on color, tactile from real products.
As the update of design and improvement, parameters and outlook of products might change, thanks for understanding.

Healthward



 17800 CASTLETON ST STE 180.CITY OF INDUSTRY CA 91748

 +1 (603) 416-3063 ·  24/7

 export@health-ward.com

 www.health-ward.com



General catalogue