



# HWA200

## ELECTRIC OPERATION TABLE

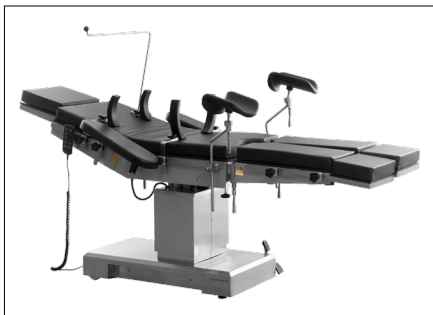


**Healthward**

Healthier  
your life

# HWA200

## FEATURES AND HIGHLIGHTS



### Technical parameters

External size (LxWxH):	2000x500x(660-960)mm
Reverse trendelenburg:	0-22°
Trendelenburg:	0-30°
Lateral tilt left/right:	0-20°
Head plate up/down:	50°/90°
Back plate up/down:	70°/15°
Leg plate down:	0-90°
Leg plate outwards:	0-90°
Kidney bridge elevation:	0-120mm
Horizontal sliding:	0-300mm
Safe working load:	250kg

### Technical configuration

<input checked="" type="checkbox"/> Arm support	2 pcs
<input checked="" type="checkbox"/> Leg support	2 pcs
<input checked="" type="checkbox"/> Body Support	2 pcs
<input checked="" type="checkbox"/> Shoulder Support	2 pcs
<input checked="" type="checkbox"/> Slider	12 pcs
<input checked="" type="checkbox"/> Tightener	2 pcs
<input checked="" type="checkbox"/> Anaesthetic Screen	1 pc
<input checked="" type="checkbox"/> Hand controller	1 pc
<input checked="" type="checkbox"/> Handwheel	1pc

**Material**

The chassis cover is made of 1.6mm high quality 304 stainless steel, which is welded by the robot seamlessly. The shape is beautiful, stable and firm.

**Mattress**

Removable memory mattress, made of high density sponge, good resilience, anti-static, anti-bedsores, anti-bacterial and anti-impact.

**Control System**

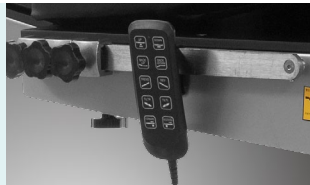
Electric control the height lifting, trendelenburg and reverse trendelenburg, tilt, back plate folding up and down, easy and convenient operation.

**Braking system**

Mechanical brake device at the side of the base, with fixed or moving function, flexible and reliable.

**Hand controller**

All functions are controlled by the hand controller.

**Kidney bridge**

With kidney bridge, the lifting range is up to 120mm.

**Battery could support**

Battery could support about 50-80 complete operation cycles. Working time could be last for one week according to useage and help to keep the operating table running in the event of power failure.

**Horizontal movement**

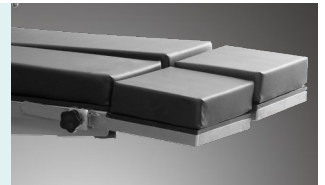
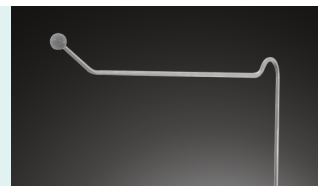
300mm horizontal movement function, with high strength phenolic resin table top, could be used for X-ray and C-arm.

**Leg plate**

The leg plate is controlled by the air spring, which makes the operation more effortless and smooth.

**Foot plate**

Standard foot plate could be used to lengthen the operating table, also could be used as a kneeling plate.

**Armrest****Anesthesia Frame****Leg Crutches****Shoulder Support****Body Supporter**

## Professional functions

Lowest position of table top

**660**mm

Highest position of table top

**960**mm

Back plate up/down

**-15°-70°**

Horizontal movement

**0-300**mm

Reversed trendelenburg

**0°-22°**

Trendelenburg

**0°-30°**

Right lateral tilt

**0°-20°**

Left lateral tilt

**0°-20°**

Head plate upward

**0°-55°**

Head plate downward

**0°-90°**

Leg section evagination

**0°-90°**

Leg plate down

**0°-90°**

Kidney bridge elevation

**0-120**mm



As the circumstance of printing, the photos might have minor difference on color, tactile from real products.  
As the update of design and improvement, parameters and outlook of products might change, thanks for understanding.

# Healthward



 17800 CASTLETON ST STE 180.CITY OF INDUSTRY CA 91748

 +1 (603) 416-3063 ·  24/7

 export@health-ward.com

 www.health-ward.com



General catalogue