

HWA105

OBSTETRIC TABLE

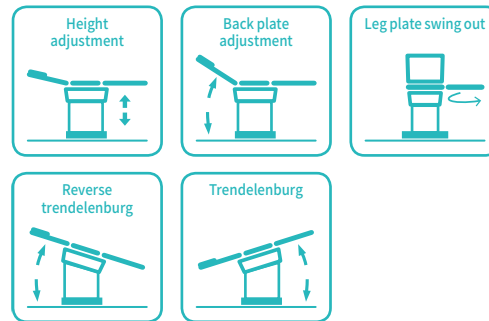


Healthward

Healthier
your life

HWA105

FEATURES AND HIGHLIGHTS

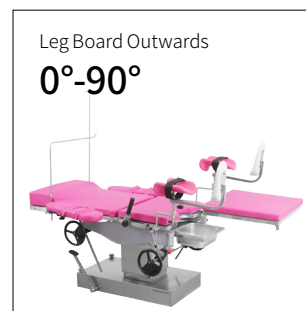


Technical parameters

External Size (LxWxH)	1900x600x700-900 mm
Back Plate Up/Down	50°/3°
Trendelenburg/Reverse Trendelenburg	10°/20°
Leg Board Outwards	90°
Working Area	600x600 mm
Patient Weight Capacity	185kg

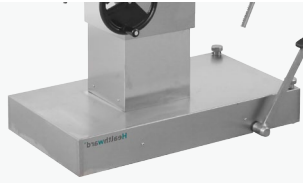
Technical configuration

<input checked="" type="checkbox"/> Bed Frame	1pc
<input checked="" type="checkbox"/> Mattress	1pc
<input checked="" type="checkbox"/> Hand Bars	2pcs
<input checked="" type="checkbox"/> Arm Support with Cushion	2pcs
<input checked="" type="checkbox"/> Leg Support with Cushion	2pcs
<input checked="" type="checkbox"/> Anesthesia Screen Frame	1pc
<input checked="" type="checkbox"/> Stainless Steel Basin	1pc
<input checked="" type="checkbox"/> Handwheel	4pcs
<input checked="" type="checkbox"/> Oil Pot (With Oil)	1pc



Material

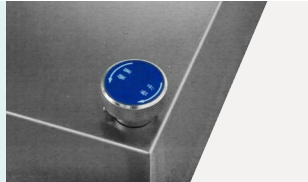
The base seat and upright column covering are made of high quality 304 stainless steel, which is anti-corrosive and can be easily cleaned.
Optional: Powder Coated Steel Base.

**Function**

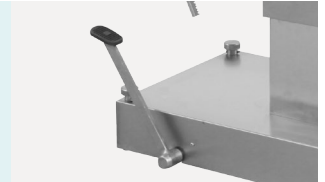
The main bed and auxiliary bed are connected with each other, auxiliary table is easy for rotating and dismantling.

**Rotary Brake Device**

Rotary brake device which is easy for moving obstetric table.

**Foot Step Hydraulic Elevating**

Foot step hydraulic elevating, Imported Y type sealing ring and is durable.

**Mattress**

The mattress adopts high density memory sponge and is once formed, with no seam.
Optional: Detachable mattress.

**Stainless Steel Sewage Basin**

Equipped with stainless steel sewage basin and other various accessories.

**Leg Support with Cushion**

Double using leg support, can be used as boatstretcher.


**Anesthesia Screen Frame****Arm Support with Cushion****Hand Bars****Handwheel**

As the circumstance of printing, the photos might have minor difference on color, tactile from real products.
As the update of design and improvement, parameters and outlook of products might change, thanks for understanding.

Healthward



 17800 CASTLETON ST STE 180.CITY OF INDUSTRY CA 91748

 +1 (603) 416-3063 ·  24/7

 export@health-ward.com

 www.health-ward.com



General catalogue